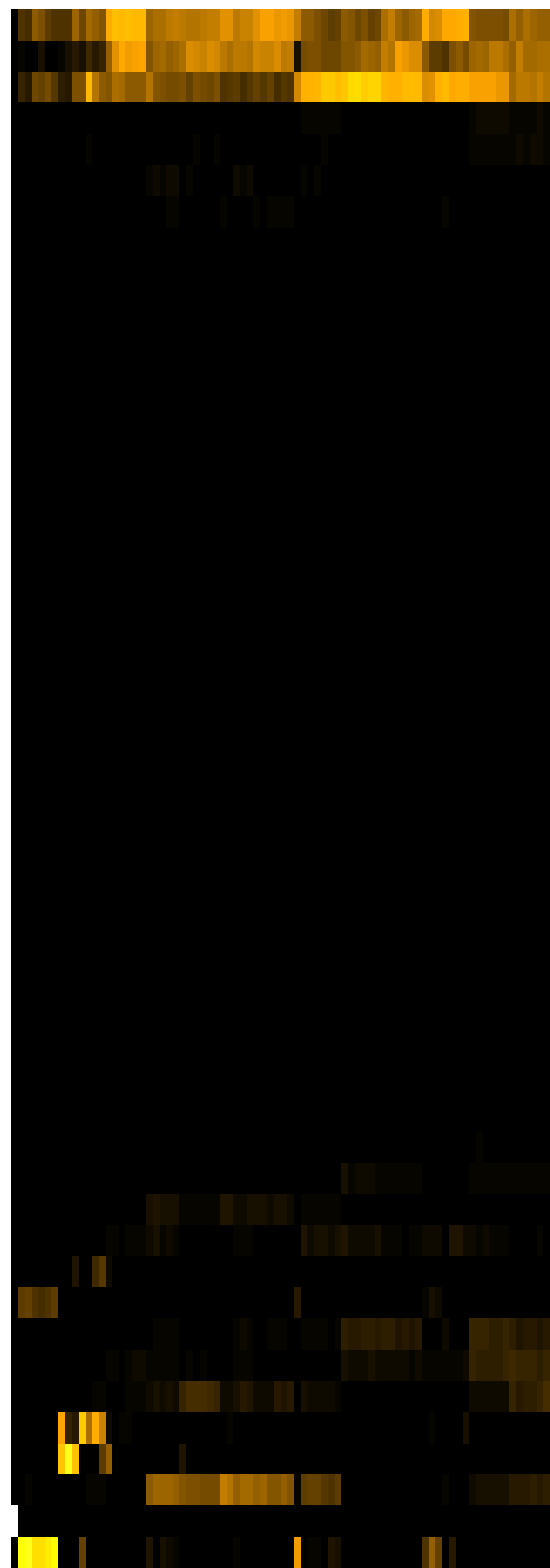
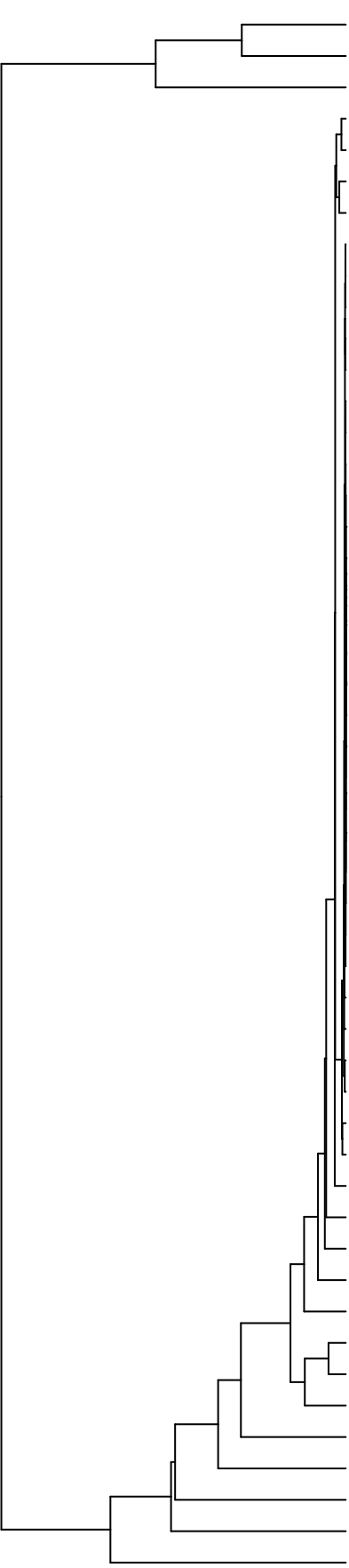


Group005
 Baseline
 Final D -PMA



- Veillonella
- Haemophilus
- Neisseria
- Gemella
- Rothia
- Eikenella
- Schaalia
- Catonella
- Oribacterium
- Stomatobaculum
- Actinomyces
- Lancefieldella
- Lachnoanaerobaculum
- Absconditabacteria_(SR1)_[G-1]
- Staphylococcus
- Novosphingobium
- Mycolicibacterium
- Lachnospiraceae_[G-2]
- Acidovorax
- Leifsonia
- Sphingobium
- Microbacterium
- Siccationidurans
- Agrobacterium
- Phyllobacterium
- Delftia
- Acinetobacter
- Riemerella
- Cutibacterium
- Saccharibacteria_(TM7)_[G-6]
- Capnocytophaga
- Lautropia
- Serratia
- Solobacterium
- Saccharibacteria_(TM7)_[G-1]
- Leptotrichia
- Alloprevotella
- Prevotella
- Granulicatella
- Aggregatibacter
- Raoultella
- Salmonella
- Campylobacter
- Porphyromonas
- Fusobacterium
- Klebsiella
- Enterobacter
- Streptococcus
- Pseudomonas
- Citrobacter

- F28914.S593
- F28914.S596
- F28914.S420
- F28914.S410
- F28914.S579
- F28914.S582
- F28914.S584
- F28914.S056
- F28914.S060
- F28914.S059
- F28914.S097
- F28914.S101
- F28914.S099
- F28914.S052
- F28914.S050
- F28914.S049
- F28914.S263
- F28914.S104
- F28914.S257
- F28914.S260
- F28914.S424
- F28914.S020
- F28914.S026
- F28914.S043
- F28914.S044
- F28914.S045
- F28914.S067
- F28914.S069
- F28914.S068
- F28914.S033
- F28914.S423
- F28914.S035
- F28914.S041
- F28914.S040
- F28914.S042
- F28914.S061
- F28914.S063
- F28914.S065

Samples

Genus